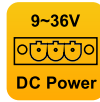




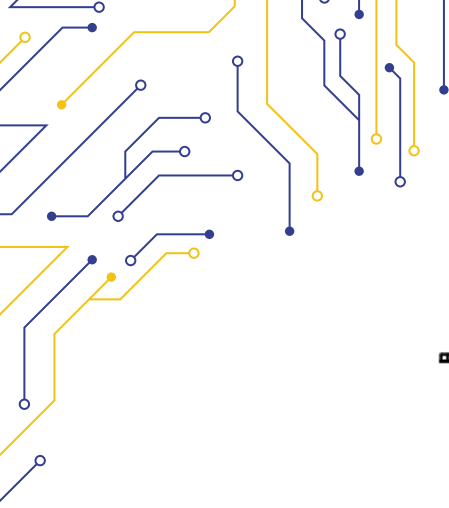
# NANOBOX-215U



## FANLESS BOX PC

MECHANICAL & ENVIRONMENTAL	
MOUNTING KIT	Wall Mount
DIMENSIONS	205 x 125 x 70.5 mm
WEIGHT	2.5/3 kg
CERTIFICATE INFORMATION	
CERTIFICATIONS	CE
OPERATING TEMPERATURE	0°C ~ 50°C
STORAGE TEMPERATURE	-40°C ~ 80°C
OPERATING HUMIDITY	40°C @ 95% Relative Humidity, non condensing
IP RATING	IP20
ORDERING	
NANOBOX	HS-(TBD)
NOTES	RAM AND STORAGE CAPACITY MUST BE SPECIFIED IN THE INQUIRY

MODEL	NANOBOX-215U
SYSTEM INFORMATION	
PROCESSORS	Intel® Core™ 12th Gen. Intel® Core™ i3-1215U, 6C/8T, 10MB, up to 3.30GHz
SYSTEM MEMORY	1x DDR4 SO-DIMM Dual Channel
MAX. MEMORY	Max. up to 64GB
GRAPHICS	Integrated Intel® UHD Graphics
BIOS	AMI UEFI BIOS
SOFTWARE SUPPORT	
OS INFORMATION	Windows® 10 / Windows® 11 Linux®
STORAGE	
M.2	1x M.2 2242 for SATA SSD/4G Module 1x M.2 2280 for NVMe SSD
SATA	1x SATA3.0 FPC Interface
EXPANSION	
M.2	1x M.2 for Wi-Fi, support PCIe & Intel® Integrated Connectivity (CNVi)
I/O	
SERIAL PORT	6x COM: default RS232. COM1/2 can be set at RS422/485 in BIOS COM5/6 are 2-wire serial communication
USB PORT	4x USB 3.2, 4x USB 2.0
VIDEO	2x HDMI 2.0
AUDIO	1x Audio Line-Out (1x CTIA 2-in-1 Audio Jack)
LED	Power Indicator
BUTTONS	1x ON/OFF Power Button
GPIO (option 8-bit)	4x GPI + 4x GPO and GND
ETHERNET	
LAN CHIPSET	1x Intel® i210, 1x Intel® i219
ETHERNET INTERFACE	10/100/1000 Mbps
LAN PORT	2x RJ45
POWER REQUIREMENT	
DC INPUT	9 ~ 36V DC
DC INPUT CONNECTOR	1x 2-pin PHOENIX connector



# NANOBOX-215U

